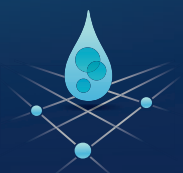


NOTHING
IS SIMPLE
IN ONCOLOGY.
NOTHING
BUT
THIS.



Idylla™ A revolutionary,
fully automated system that makes
molecular testing convenient and fast.
Suitable for any lab.

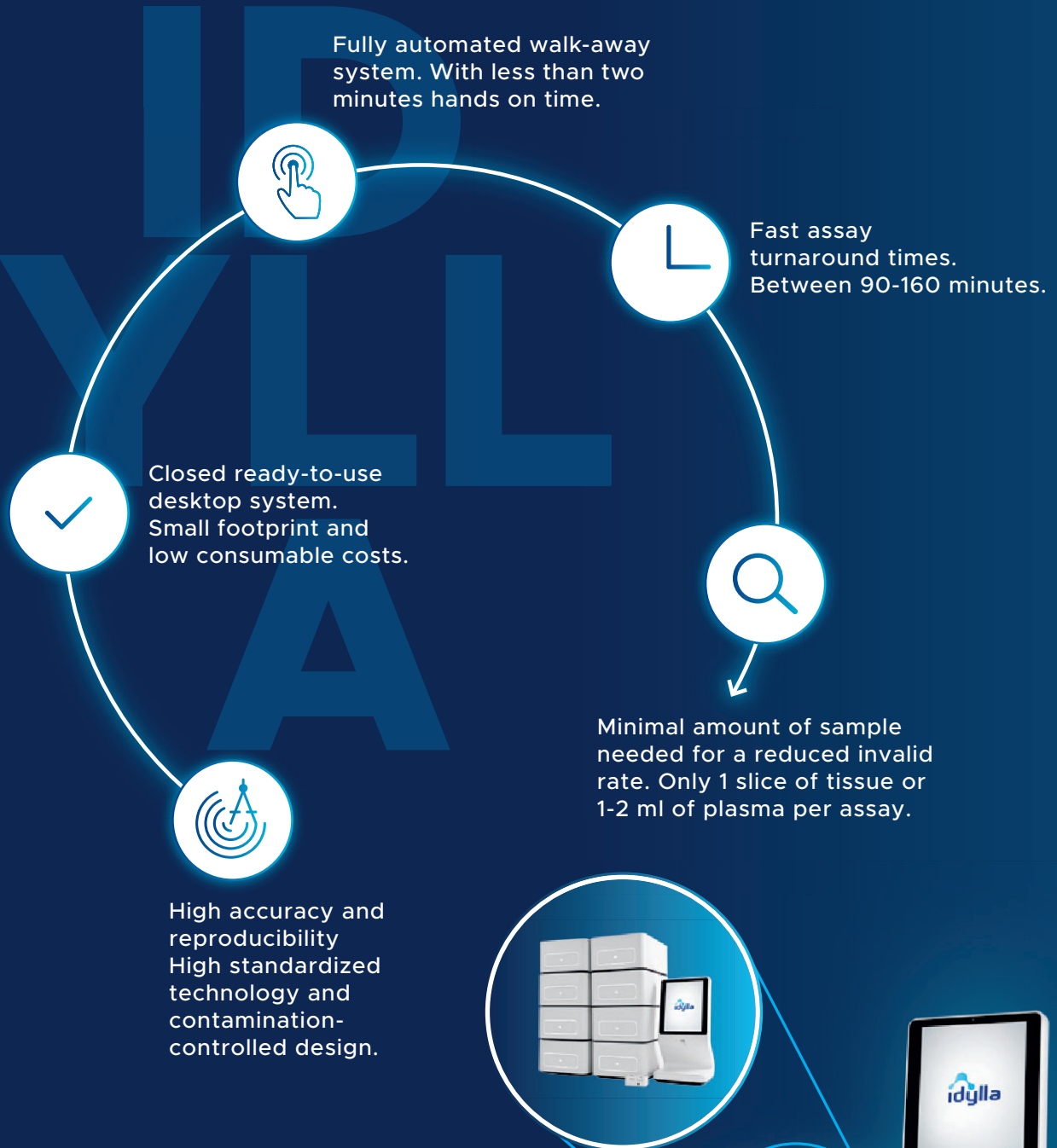


BIOCARTIS



WE AIM
TO PROVIDE
**RAPID
ACCESS**
TO HIGH-LEVEL
MOLECULAR TESTING
ANYTIME,
ANYWHERE.

THE IDYLLA™ SOLUTION - MOLECULAR TESTING SUITABLE FOR VIRTUALLY ANY LAB.



THE IDYLLA™ SYSTEM. BUILT FOR YOUR NEEDS.

Idylla™ is a modular instrument ready to accommodate your lab's throughput even as it changes over the years.



IDYLLA™ FITS ANY SIZE LAB



IDYLLA™ IS A COST-EFFECTIVE IN-HOUSE SOLUTION EVEN FOR SMALL SAMPLE VOLUMES

- Easy to implement and maintain
- No molecular infrastructure needed
- No batching needed
- No external controls needed



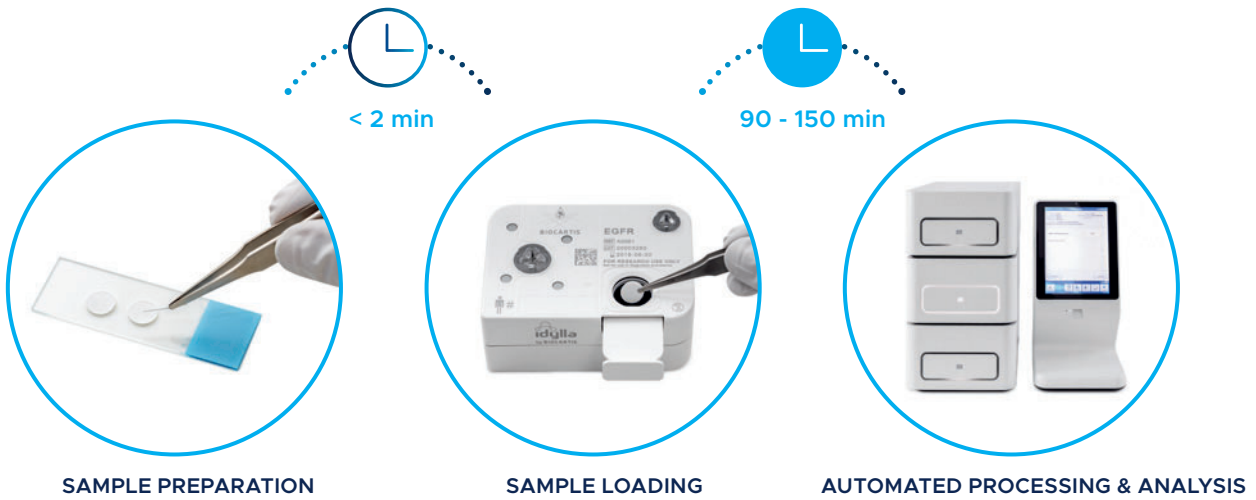
IDYLLA™ PROVIDES AN ULTRA-RAPID ACTIONABLE SOLUTION COMPLEMENTING COMPREHENSIVE NGS PROGRAMS

- Short turnaround time and minimal hands-on time
- Minimal sample input requirements
- On demand testing
- Seamless integration into virtually any laboratory workflow

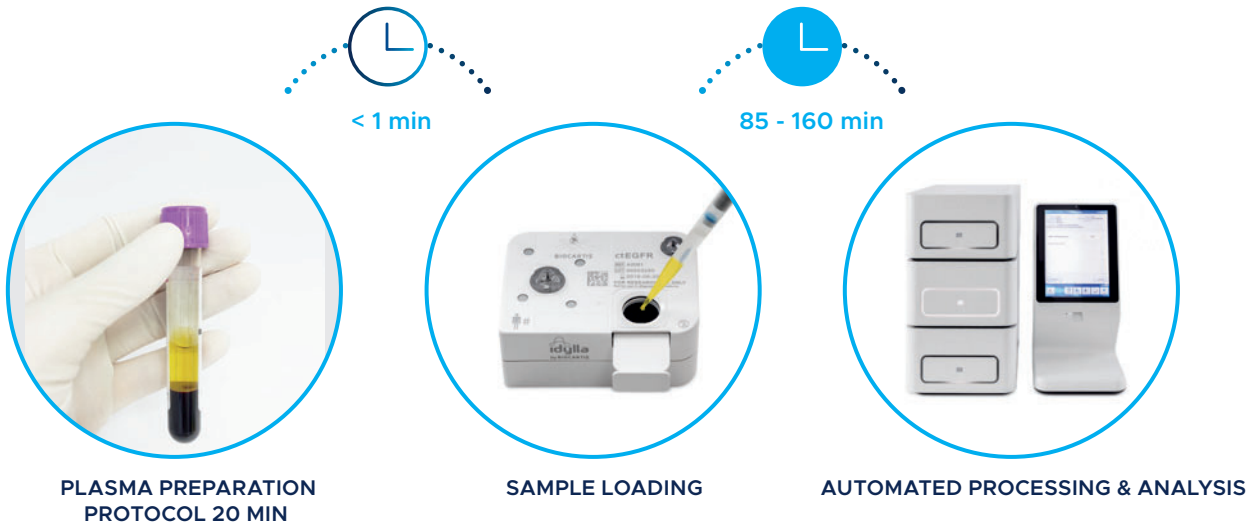


THE REVOLUTIONARY IDYLLA™ WORKFLOW

FFPE WORKFLOW



LIQUID BIOPSY WORKFLOW



IDYLLA™ COMPARED TO OTHER TECHNOLOGIES

MINIMAL HANDS-ON AND ASSAY TURNAROUND TIMES


> 90 - 160 min






Other RT - PCR> 1 day












NGS> 3-5 days

REDUCED NUMBER OF INSTRUMENTS AND CONSUMABLES NEEDED



	OTHER RT-PCR	NEXT GENERATION SEQUENCING
INSTRUMENTS		
CONSUMABLES		
LAB INFRASTRUCTURE (# OF ROOMS)	3	4

Based on workflow exercise in real-life laboratory setting. Reference technologies used: Illumina MiSeq and Qiagen Therascreen.

THE IDYLLA™ ASSAYS. MINIMAL SAMPLE REQUIREMENTS AND VERSATILE SAMPLE TYPES.



IDYLLA™ TISSUE SPECIMEN REQUIREMENTS

KRAS, NRAS & BRAF

- 1 x 5 µm FFPE glass mounted tissue section
- 1 x 10 µm FFPE tissue section
- Neoplastic cell content
 - If < 10%, macrodissection needed

> 50 – 600 mm²
 > 25 – 300 mm²
 ≥ 10%

BRAF

- 1 x 5 µm FFPE glass mounted tissue section
- 1 x 10 µm FFPE tissue section
- Neoplastic cell content
 - If < 50%, macrodissection needed

> 50 – 600 mm²
 > 25 – 300 mm²
 ≥ 50%

EGFR

- 1 x 5 µm FFPE tissue section
- Neoplastic cell content
 - If < 10%, macrodissection needed

≥ 1 mm²
 ≥ 10%

MSI

- 1 x 5 µm FFPE tissue section
- 1 x 10 µm FFPE tissue section
- Neoplastic cell content
 - If < 20%, macrodissection needed

> 50 – 600 mm²
 > 25 – 300 mm²
 ≥ 20%



IDYLLA™ PLASMA SPECIMEN REQUIREMENT

- 1-2 ml plasma per cartridge and two validated tube types:



K²EDTA tubes,
process within 4 hours



Streck Cell-freeDNA BCTs,
process within 3 days



お問い合わせ先

株式会社ニチレイバイオサイエンス

本 社 〒104-8402 東京都中央区築地6-19-20

TEL.03(3248)2208 FAX.03(3248)2243

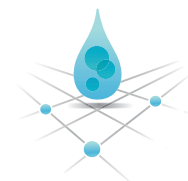
関西支所 〒530-0043 大阪市北区天満1-3-21

TEL.06(6357)2128 FAX.06(6357)2330

ホームページ <https://www.nichirei.co.jp/bio/>

For Research Use Only.
Not for use in diagnostic procedures.

Biocartis NV
Generaal de Wittelaan 11 B
2800 Mechelen - Belgium
T +32 15 632 888



BIOCARTIS
biocartis.com